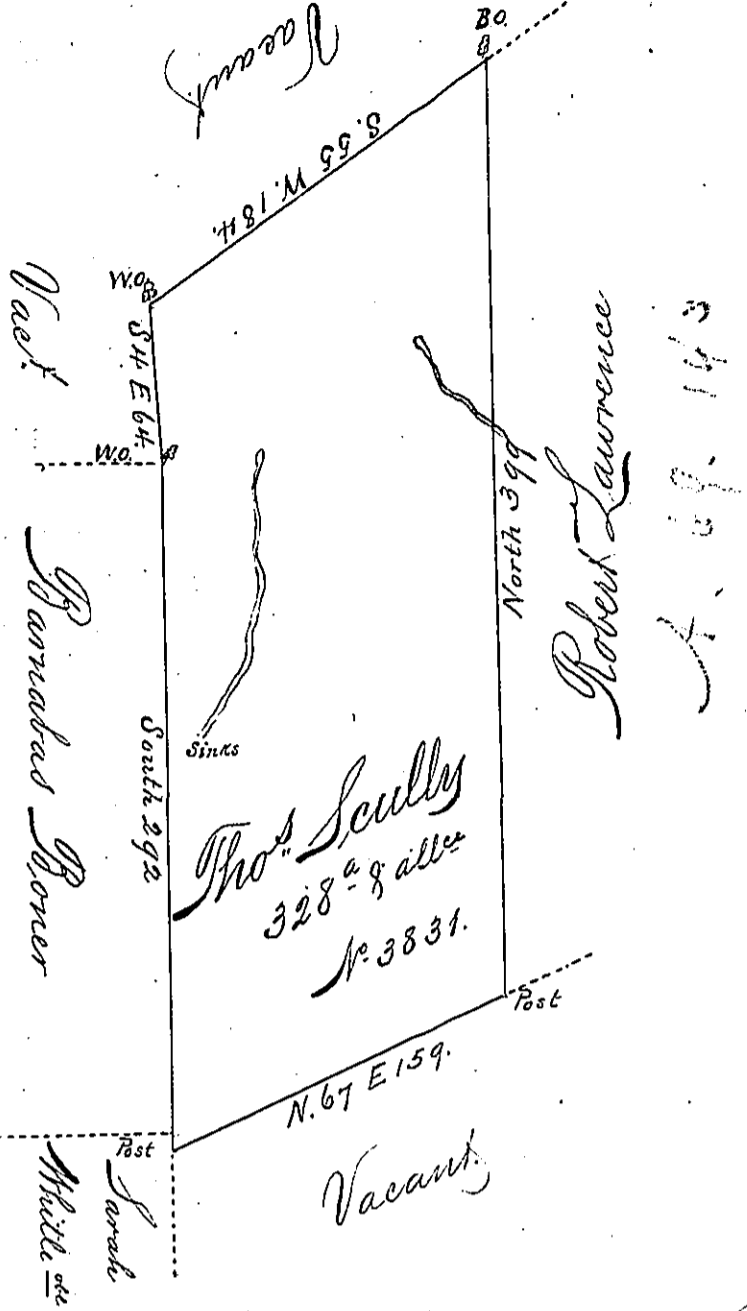


D-19-121

C. 155-110-111



A Draught of a Tract of Land called Florence Situate on the South side of the West Branch of Susquehanna in the County of Berks Surveyed the 19<sup>th</sup> Day of October 1771 for Thomas Scully in pursuance of his Application N<sup>o</sup> 3831 Dated the 31 Day of Aug<sup>r</sup> 1769 containing Three hundred & twenty eight Acres & alle of Six acres p Cent &c<sup>a</sup>

Chas. Lukens D<sup>s</sup>

To John Lukens, Esq<sup>r</sup>  
 Surveyor General

IN TESTIMONY that the above is a copy of the original remaining on file in the Department of Internal Affairs of Pennsylvania, made conformably to an Act of Assembly approved the 16th day of February, 1833, I have hereunto set my Hand and caused the Seal of said Department to be affixed at Harrisburg, this twelfth day of February 1895.

Isaac B. Brown  
 Secretary of Internal Affairs.